

45/48

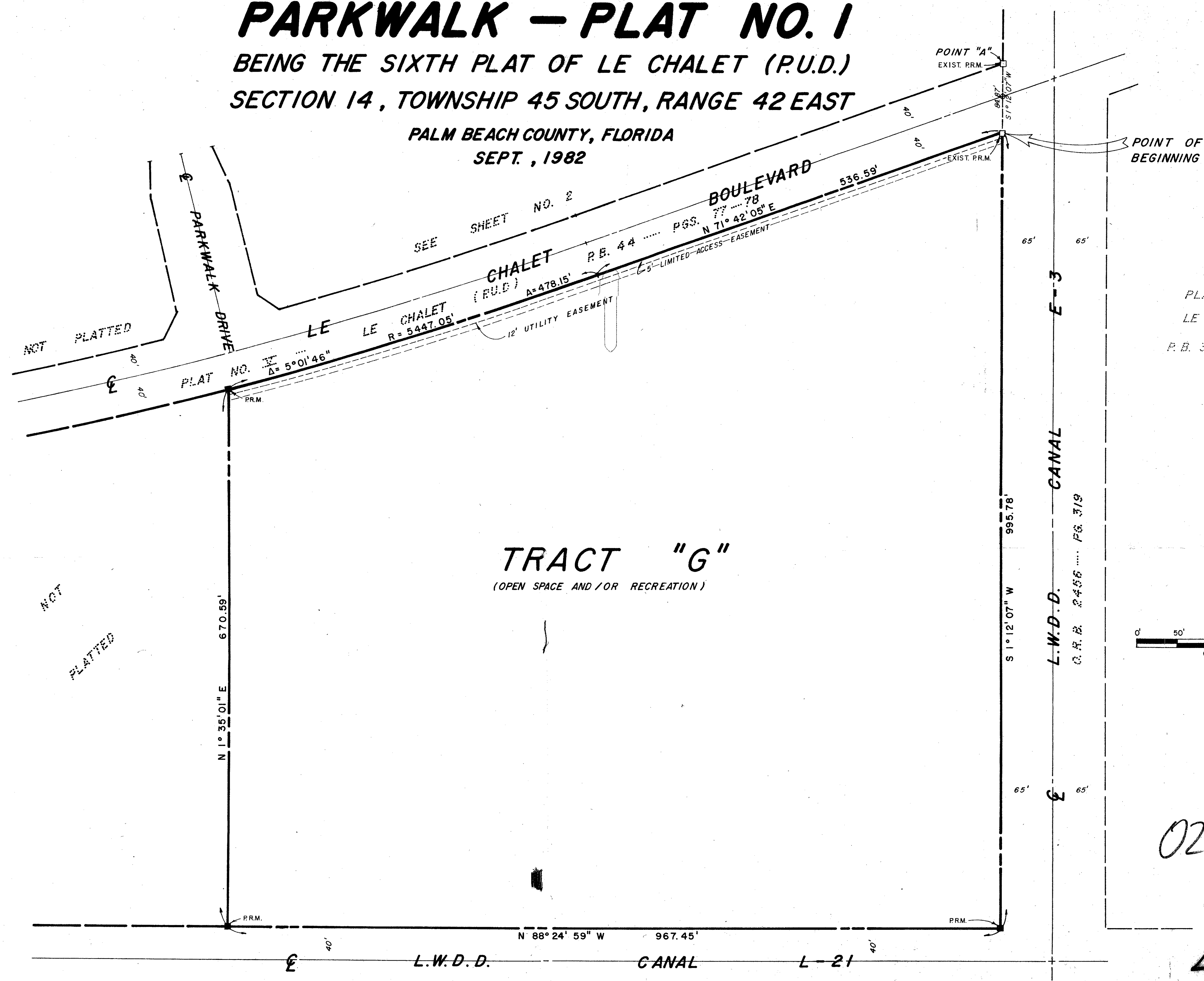
PARKWALK - PLAT NO. 1

BEING THE SIXTH PLAT OF LE CHALET (P.U.D.)
SECTION 14, TOWNSHIP 45 SOUTH, RANGE 42 EAST

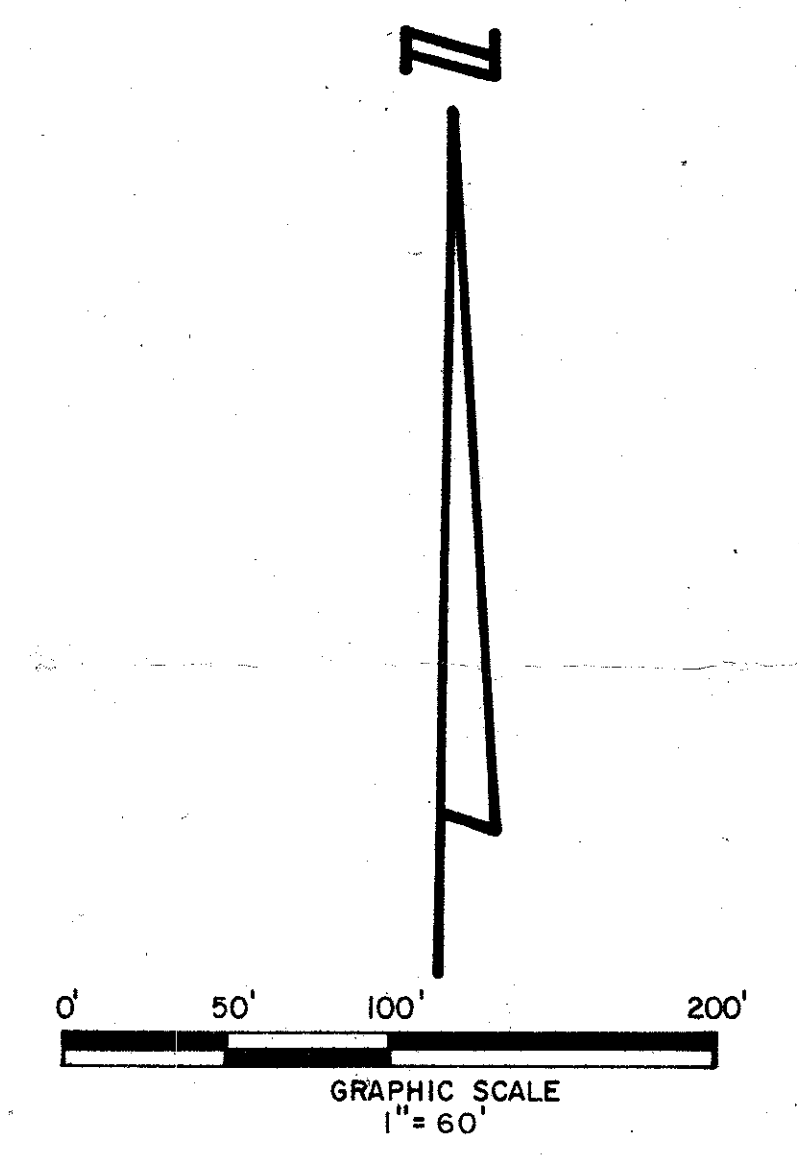
PALM BEACH COUNTY, FLORIDA
SEPT., 1982

48

STATE OF FLORIDA }
COUNTY OF PALM BEACH }
This Plat was filed for record at _____ M.
this _____ day of _____
19 _____, and duly recorded in Plat Book No. _____
on page _____
JOHN B. DUNKLE, Clerk Circuit Court
By _____, D.C.



PLAT NO. IX-B
LE CHALET (P.U.D.)
P.B. 37- PGS. 57-62



0270-305
14-45-42

45/48

**PARKWALK
PLAT NO. 1**
IN 4 SHEETS SHEET NO. 4

O. R. B. 3416 - PGS. 563 - 566

THIS INSTRUMENT WAS PREPARED BY JOSEPH M. TUCKER IN THE OFFICES OF ROSSI AND MALAVASI ENGINEERS, INC., 1675 PALM BEACH LAKES BOULEVARD, WEST PALM BEACH, FLORIDA 33401 TELEPHONE: 737-6546.

ROSSI AND MALAVASI ENGINEERS, INC. WEST PALM BEACH, FLORIDA			
Date	SEPT., 1982	Designed	R. ANDERSON
Drawn	T. CURBELO	Scale	1" = 60'
Checked		Job No.	4210-82
		File No.	S-1266-00